

 <p style="text-align: center;"><b>Tests &amp; Testing Methodologies for Advanced Languages</b></p>		<b>Title:</b> Demonstrator of the test infrastructure
		<b>Version:</b> 1.0 <b>Date :</b> 31/10/05 <b>Pages :</b> 8
		<b>Author:</b> Leon Wolters, Jos van Rooyen (LogicaCMG)
		<b>To:</b> TT-MEDAL Consortium
The TT-MEDAL Consortium consists of: Conformiq Software, CWI, DaimlerChrysler, FOKUS, Improve Quality Services, LogicaCMG, NetHawk, Nokia, Railinfrabeheer, Testing Technologies, VTT Electronics		<b>Printed on:</b> 31/10/2005
<b>Status:</b> <input type="checkbox"/> Draft <input type="checkbox"/> To be reviewed <input type="checkbox"/> Proposal <input checked="" type="checkbox"/> Final / Released	<b>Confidentiality:</b> <input checked="" type="checkbox"/> Public - Intended for public use <input type="checkbox"/> Restricted - Intended for TT-MEDAL consortium only <input type="checkbox"/> Confidential - Intended for individual partner only	
<b>Deliverable ID:</b> <span style="float: right;"><b>D2.6.2</b></span>		
<b>Title:</b> <p style="text-align: center;"><b>Demonstrator of the test infrastructure</b></p>		
<b>Summary / Contents:</b> <p>This document describes how to use the TFLtoTTCN3 application. This is a tool that generates Testing and Test Control Notation version 3 (TTCN-3) files out of TestFrame Language (TFL) files.</p>		

	<p>Demonstrator of the test infrastructure</p> <p>Deliverable ID: D2.6.2</p>	Page : 2 of 8
		Version: 1.0 Date : 31/10/2005
		Status : Final Confid : PublicPublic

## TABLE OF CONTENTS

<b>CHANGE LOG .....</b>	<b>3</b>
<b>APPLICABLE DOCUMENT LIST .....</b>	<b>3</b>
<b>EXECUTIVE SUMMARY .....</b>	<b>4</b>
<b>1. Introduction.....</b>	<b>5</b>
<b>2. General usage of the tool .....</b>	<b>5</b>
<b>3. Descriptions of all user settings .....</b>	<b>5</b>
<b>4. Integration in Excel .....</b>	<b>6</b>


	<p>Demonstrator of the test infrastructure</p> <p>Deliverable ID: D2.6.2</p>	Page : 3 of 8
		Version: 1.0 Date : 31/10/2005
		Status : Final Confid : PublicPublic

## CHANGE LOG

Vers.	Date	Author	Description
0.1	28/10/05	Leon Wolters, Jos van Rooyen	Document outline
1.0	28/10/05	Leon Wolters, Jos van Rooyen	Final release

## APPLICABLE DOCUMENT LIST


Ref.	Title, author, source, date, status	Identification
[1]	D1.1.2 , Mapping document TFL to TTCN-3	
[2]		

	Demonstrator of the test infrastructure  Deliverable ID: D2.6.2	Page : 4 of 8
		Version: 1.0 Date : 31/10/2005
		Status : Final Confid : PublicPublic

## EXECUTIVE SUMMARY

This document describes how to use the TFLtoTTCN3 application. This is a tool that generates Testing and Test Control Notation version 3 (TTCN-3) files out of TestFrame Language (TFL) files.

The rules used for this translation of TFL into TTCN-3 are specified in the TFL to TTCN-3 mapping document; this document is part of the TT-Medal deliverable D1.1.2.

	<p>Demonstrator of the test infrastructure</p> <p>Deliverable ID: D2.6.2</p>	Page : 5 of 8
		Version: 1.0 Date : 31/10/2005
		Status : Final Confid : PublicPublic

## 1. INTRODUCTION

This document describes how to use the TFLtoTTCN3 application. This is a tool that generates Testing and Test Control Notation version 3 (TTCN-3) files out of TestFrame Language (TFL) files.

The rules used for this translation of TFL into TTCN-3 are specified in the TFL to TTCN-3 mapping document; this document is part of the TT-Medal deliverable D1.1.2.

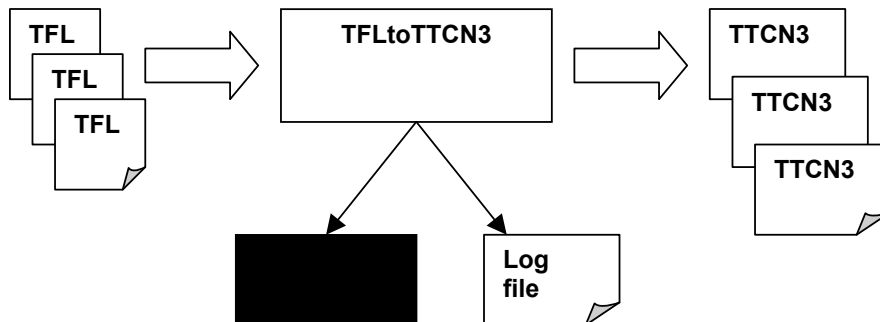
## 2. GENERAL USAGE OF THE TOOL

The TFLtoTTCN3 application is a tool that translates test specifications written in TestFrame Language (TFL) into specifications written in the Testing and Test Control Notation version 3 (TTCN-3).

The translator application is implemented as an executable named TFLtoTTCN3.exe. It takes as command parameter the name of an ini-file that must specify the user settings needed for translation (see section 3 for a description of all these settings).

The tool will read the TFL files specified in the settings and write TTCN-3 files in a specified directory. Also, logging is (optionally) generated.

See the figure below for a graphical representation of this process.




## 3. DESCRIPTIONS OF ALL USER SETTINGS

The user settings must be placed in the ini-file that is read by the application. Below each of the settings is described.

### Cluster

The value of this setting specifies the main cluster: the TFL-file to be translated and that specifies all other TFL files for that test run.

	<p style="text-align: center;">Demonstrator of the test infrastructure</p> <p style="text-align: center;">Deliverable ID: D2.6.2</p>	Page : 6 of 8
		Version: 1.0 Date : 31/10/2005
		Status : Final Confid : PublicPublic

### ClusterDir

The value of this setting specifies the directory in which the clusters (TFL files) must be placed. That is, the main cluster and all possible subclusters.

### TemplateDir

The value of this setting specifies the directory in which the declared TFL templates (TFL files with extension tpl) are to be found.

### OutputDir

The value of this setting specifies the directory in which the generated output files (the TTCN-3 files) are placed.

### TFLModule

The value of this setting is the name of the TTCN-3 module that contains a specific set TTCN-3 functions that offer TFL functionality.

### UserModules

The value of this setting is the name or list of names of TTCN-3 modules that contain user-specific TTCN-3 functions on which the user defined action words in the TFL files are mapped. If more than one name is specified, a semi-colon must be used to separate two names.

### LogToFile

The value of this setting specifies whether a log of the translation process should be written to a file. The values can be yes or no. If yes, the file TFLtoTTCN3.log will be generated containing the log lines.

### LogToPrompt


The value of this setting specifies whether a log of the translation process should be written to the output screen. The values can be yes or no. If yes, the log lines will be written to the output screen.

Below is an example of the contents of such an ini-file.

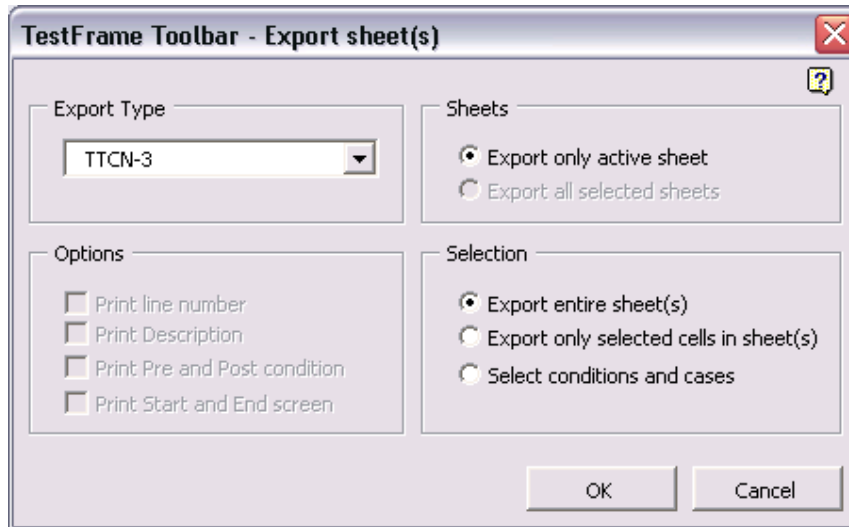
```
[SETTINGS]
Cluster=MyCluster.txt
ClusterDir=../Input
TemplateDir=../Input
OutputDir=../Output
TFLModule=SupportTFL
UserModules=MyModule1;MyModule2
LogToFile=yes
LogToPrompt=yes
```

## 4. INTEGRATION IN EXCEL


There has also been an integration implemented of the TFLtoTTCN-3 tool in Excel. This is part of the TestFrame toolbar.

	<p>Demonstrator of the test infrastructure</p> <p>Deliverable ID: D2.6.2</p>	Page : 7 of 8
		Version: 1.0 Date : 31/10/2005
		Status : Final Confid : PublicPublic

Translation can be starting from the Export option. The figure below shows this window.



When OK is pressed, a window appears in which settings can be entered. By pressing Export the translation will start. Log lines will appear in the Progress list. (See the figure below.)

	<p>Demonstrator of the test infrastructure</p> <p>Deliverable ID: D2.6.2</p>	Page : 8 of 8
		<p>Version: 1.0</p> <p>Date : 31/10/2005</p>
		<p>Status : Final</p> <p>Confid : PublicPublic</p>

